

BEST PRACTICES FOR A DIFFERENT TECHNIQUE

These tips can help optimize your technique with the BiZact™ tonsillectomy device



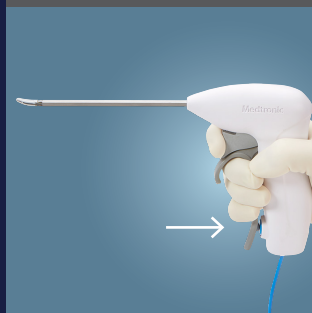
DEVICE HANDLING

Grasping tissue



Close lever until it depresses the blue activation button. Depressing the button indicates you are about to activate energy.

Activating energy



Close the lever until the blue energy button clicks. Hold while the generator controls energy delivery. Wait for the seal cycle to complete (signaled by two short tones).

Additional tips:

- Ensure you are not straining during activation.
- Do not pull the knife trigger until the seal cycle is complete.
- Avoid excessive tissue tension during the seal cycle.

Dividing sealed tissue



After the seal is complete, pull the knife trigger to divide tissue. Release the lever to open the jaws and release tissue.

Additional tips:

- Ensure you open the jaws to release the tissue.
- The tissue will not fall away until the jaws are opened.
- Avoid dragging the sealed tissue as this can cause bleeding.

Keeping jaws clean



To ensure proper delivery of energy and to avoid sticking, clean the electrodes with a moist gauze as needed.

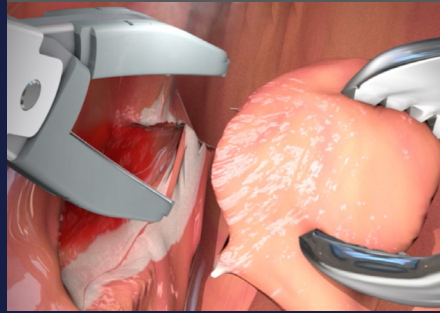
PROCEDURE STEPS AND ALARMS

Entering the mucosa



Use the poke and spread technique for opening the mucosa and finding the desired tissue planes.

Muscle bed cleanup



The BiZact™ device is designed to facilitate hemostasis after the tonsil is removed, if it's required. To do so, grasp tissue to energize — without pulling the knife trigger — for sealing capability only.

Re-grasp alarms

Re-grasp alarms are signaled by four short tones. If this occurs, do not pull the knife trigger as the seal is not complete.

Common causes of a re-grasp alarm:

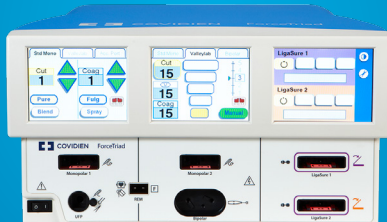
- There is too little tissue within the jaws; repositioning is required.
- The knife blade was pulled during the seal cycle; the seal is incomplete. Do not open the jaws. Re-energize the targeted tissue.
- The lever is released before the seal cycle tone. This indicates the seal is not complete and should not be divided.

GENERATOR COMPATIBILITY

Ensure generators are updated to the proper software version



Valleylab™ FT10
energy platform:
V2.0 (Plug into the LigaSure™ port)



ForceTriad™
energy platform:
V4.0 (Plug into the LigaSure™ 1 port)



Valleylab™ LS10
energy platform†:
V1.2

Medtronic

IMPORTANT: Please refer to the package insert for complete instructions, contraindications, warnings and precautions.

© 2021 Medtronic. All rights reserved. Medtronic, Medtronic logo and Further, Together are trademarks of Medtronic. All other brands are trademarks of a Medtronic company. 21-weu-bizact-tips-and-tricks-4969361

[medtronic.com/covidien/uk](https://www.medtronic.com/covidien/uk)