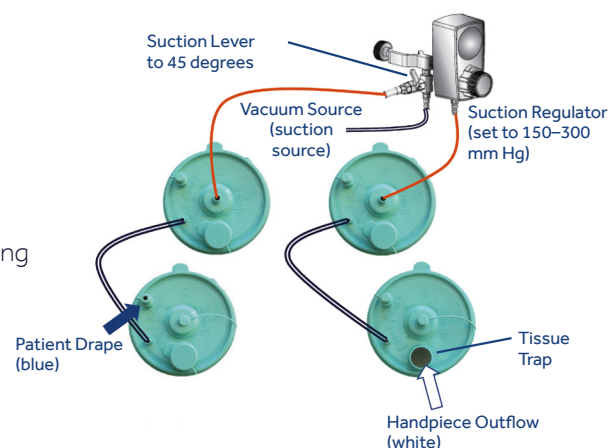


# TruClear™ SYSTEM

## QUICK START GUIDE

### 1. SET UP CANISTERS

- Insert specimen trap
- Connect bottom port to vacuum source
- Set side suction lever to 45 degrees
- Connect jumper tubes
- Connect color-coded tubing to corresponding canister (blue, white)

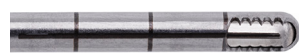


### 3. CHOOSE BLADE

#### Soft tissue devices

Oscillate mode: **ON**  
 Default speed: **<800>**  
 Optimal speed: **<1500>**

72202536 – TruClear™  
 Soft Tissue Shaver Mini



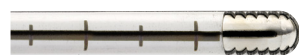
72204064 – TruClear™  
 Dense Tissue Shaver Mini



#### Dense tissue devices

Oscillate mode: **OFF**  
 Default speed: **1100**  
 Optimal speed: **2500**

7209509 – TruClear™  
 Soft Tissue Shaver Plus



72203012 – TruClear™  
 Dense Tissue Shaver Plus



- Switching modes:**
1. Tap oscillate button.
  2. Depress footswitch.



- Change speed:**
1. Push up/down button on system.
  2. Depress footswitch.

### 2. ACTIVATE HYSTEROLUX™ FLUID MANAGEMENT SYSTEM



Turn machine on.



Plug in cartridge and wait for "Tubaset Accepted" on screen.



Spike fluid bag. Open clamps.



Turn on suction and press start to initiate instrument recognition. Wait until complete. Close inflow.

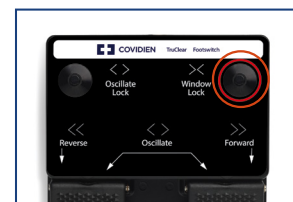


Reset deficit.

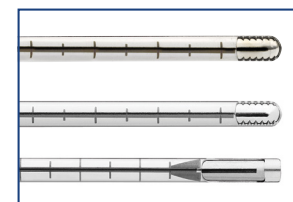
### 4. WINDOW LOCK†



Turn suction lever to off position. Attach device to handpiece. Insert into scope. Position so cutting window is visible.



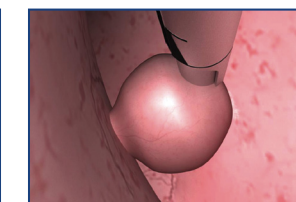
Depress and hold window lock button on footswitch.



Line up inner black line with outer black line on device.



Turn suction lever to on position.



Place cutting window against pathology. Depress footswitch to begin resection.



†The TruClear™ dense tissue shaver mini is shipped with the window lock preset

To review the information needed to understand the use of these products, including indications for use, contraindications, effects, precautions and warnings, please consult the product's Instructions for Use prior to use.