

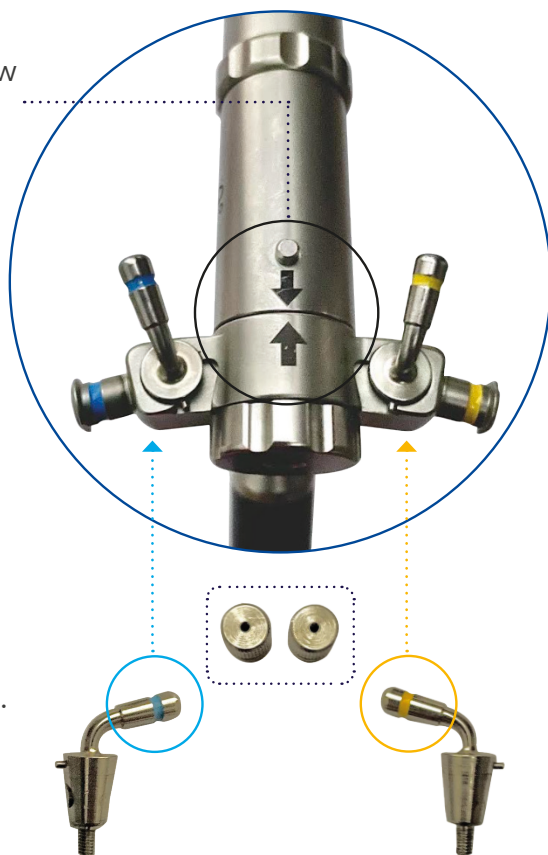
Manual set up

TruClear™ Elite Hysteroscope Mini
TruClear™ Elite Hysteroscope Plus

Align **black** arrow on scope and **black** arrow on insert to assemble.†

Blue stopcock belongs in **blue** inflow port (left).

Screws can be used on either inflow or outflow.



TruClear™ Elite hysteroscope seal. This is single use and disposable.

Yellow stopcock belongs in **yellow** outflow port (right).

†Always refer to the Instructions For Use included with the product for complete indications, instructions, warnings, precautions, and contraindications.

[medtronic.com/truclear](https://www.medtronic.com/truclear)

©2022 Medtronic. Medtronic, Medtronic logo, and Engineering the extraordinary are trademarks of Medtronic. All other brands are trademarks of a Medtronic company. 01/2022 - US-UW-2100196 - [WF# 6155768]



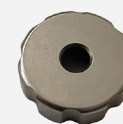
TruClear™ Elite Mini
6.0 mm Hysteroscope

TruClear™ Elite mini insert has long "golf tee" neck



TruClear™ Elite Plus
7.25 mm Hysteroscope

Each kit contains six pieces:



One retaining cap



One light adapter



Two screws



Two stopcocks